

KET

EDUCATION



YOUNG WRITERS CONTEST

KET's annual Young Writers Content provides a creative space for your PreK-12 students to submit works across four categories of writing – Graphic Novel, Poetry, Illustrated Story, and Short Story. There is no set theme, allowing your students to explore the depths of their own interests and creativity. Even if you don't plan to submit student work, our slate of related resources below can benefit your class!

CREATIVE WRITING TOOLKITS

KET's new Creative Writing Toolkits supply classroom-ready lessons and activities to guide you in introducing and exploring Graphic Novel, Poetry, Illustrated Story and Short Story experiences into your learning spaces. With background information, printable templates, and active learning lessons, writers of all experience levels can explore, grow, and hone their skills.

ON THE SAME PAGE

Intended to ignite excitement and passion, virtual visits with a diverse collection of authors and artists give students a live look into their processes, backgrounds, and experiences. These live visits are targeted across grade bands and provided free of charge for students across Kentucky. Past visits are archived on KET Education YouTube channel. Learn more and register for visits online now!

The 2023 Young Writers Contest launches fall 2022 and will run through early 2023. Learn more at KET.org/writerscontest.

YOUR PARTNER IN BLENDED LEARNING

KET resources and services encourage critical thinking, creativity, communication, and collaboration in schools throughout Kentucky. The resources, workshops and consultations highlighted in this book are designed to help create effective learning environments for you and your students.

Get started exploring our rich collection of digital resources by visiting PBS LearningMedia, your gateway to thousands of videos, images, and other classroom materials. Its high-quality multimedia resources are targeted to students and teachers from early childhood through adult education.

The KET Media Lab provides in-person and virtual training for students in technology resources, multimedia production, and more. Add to that the yearly KET Summer Professional Development Days plus virtual and onsite workshops and presentations, and you'll find that KET is always ready to help you master the new blended learning environment.



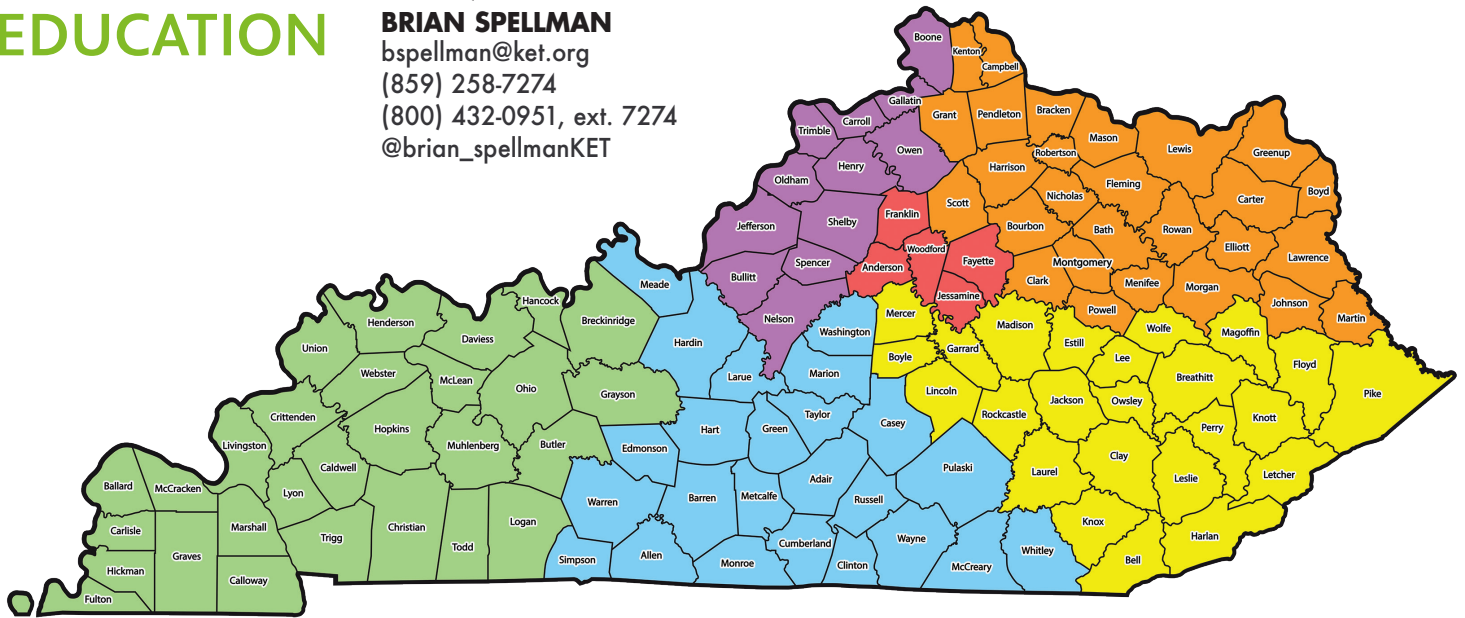
EDUCATION DIVISION

education@ket.org
(800) 432-0951, ext. 7272

Director, K-12 School Services:

BRIAN SPELLMAN

bspellman@ket.org
(859) 258-7274
(800) 432-0951, ext. 7274
@brian_spellmanKET



K-12 REGIONAL EDUCATION CONSULTANTS



WEST

Amy Grant
(270) 314-8842
(800) 432-0951, ext. 7905
agrant@ket.org
@AmyGrantKET



SOUTH CENTRAL

Kathy Davis
(606) 872-3950
(800) 432-0951, ext. 7267
kdavis@ket.org
@KathyDavisKET



NORTH CENTRAL

Larry Moore
(859) 258-7127
(800) 432-0951, ext. 7127
lmoore@ket.org
@larrymooreKET



CENTRAL

Cynthia Warner
(859) 258-7263
(800) 432-0951, ext. 7263
cwarner@ket.org
@CWarner



NORTHEAST

Lynn Shaffer
(859) 258-7492
(800) 432-0951, ext. 7492
lshaffer@ket.org
@LShafterKET



SOUTHEAST

Amy Bradshaw
(859) 258-7150
(800) 432-0951, ext. 7150
abradshaw@ket.org
@AmyBradshaw_KET

EARLY CHILDHOOD



DIRECTOR, EARLY CHILDHOOD EDUCATION

Amanda Wright
(800) 432-0951, ext. 7258
awright@ket.org



EARLY CHILDHOOD CONSULTANT

Holly Ackerman
(800) 432-0951, ext. 7268
hackerman@ket.org

SOCIAL MEDIA

Want information on the newest classroom resources and education trends?
Find the KET Education Division on social media and in your inbox!



@EDUCATIONKET
@KETEARLYED
@KETADULTED



@KETEARLYED



@EDUCATIONKET
@KETEARLYED
@KETADULTED
@KET_WORKS



YOUTUBE.COM/KETEDUCATION
YOUTUBE.COM/KETADULTLEARNING

NEWSLETTERS

Subscribe to the KET Classroom newsletter for all of the latest information about PreK-12 resources, services, events, and news straight to your inbox.

For more specialized information check: Arts Education, Early Childhood, World Languages, Media Arts, and Adult Education. Just visit to KET.org/educator-signup.



NEW & NOTABLE

FROM KET EDUCATION



NEWS QUIZ

Join other students across Kentucky and the United States for KET's weekly current events show. Targeted to grades 4-8, this kid-friendly, interactive program features a 10-question quiz based on each week's stories. Your students will stay up to date with state, national, and international stories. There's something for everyone, from election coverage and technology innovations to inspiring artists and enchanting animals. Learn more at KET.org/newsquiz.



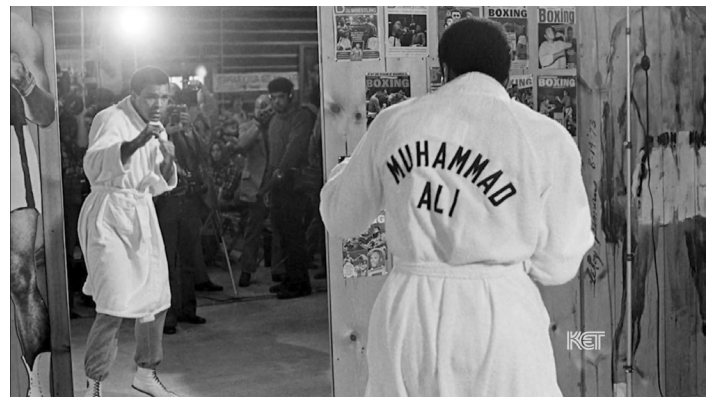
SOCIAL STUDIES SHORTS

From the team that brings you News Quiz, this series explores social studies and civics topics from Kentucky to the nation and the world. Episodes cover topics like the Kentucky legislature and how a bill becomes law and are accompanied by discussion prompts, vocabulary and a short printable quiz. New episodes feature the Kentucky Derby, civic duties, Kentucky's geographic regions and the flag of the U.S. Check them out by searching "Social Studies Shorts" on PBS LearningMedia.



KENTUCKY FIELD TRIPS

Two more videos have been added to KET's Kentucky Field Trips collection on PBS LearningMedia. The field trip to the Falls of the Ohio goes out on the riverbank for a close-up look at the world's largest exposed Devonian fossil beds. The field trip to AppHarvest takes students to the future of agriculture with a tour of one of the largest indoor farms in the world, in Morehead. These new field trips join KET's recent field trip to the Kentucky Capitol.



KENTUCKY STUDIES

Discover the rich culture of Kentucky in this collection on PBS LearningMedia, which features Kentuckians who made their mark on history and the places that made Kentucky what it is today. New resources feature clips from two KET documentaries, *Angels on Horseback: Midwives in the Mountains* and *The Pack Horse Librarians of Appalachia* as well as videos from another recent documentary, *City of Ali*. Visit PBS LearningMedia and search "Kentucky Studies" to get started.

NEW & NOTABLE

FROM KET EDUCATION



SOCIAL AND EMOTIONAL LEARNING: THE ARTS IN EVERY CLASSROOM

Managing emotions and behavior is key to student success and a healthy classroom community. This new collection offers resources to help educators and parents understand emotional development and lead students in art projects that build those skills—projects that can be incorporated into almost any classroom subject. Explore these resources by searching “The Arts in Every Classroom” on PBS LearningMedia.



ARTSVILLE

Bring your students on a trip to Artsville, where art takes center stage! Your class will learn dance, drama, music, and visual art concepts by watching these fun animations—available in both English and Spanish. Get started by searching “Artsville” on PBS LearningMedia.



MEDIA ARTS TOOLKIT

Videos illustrate how educators all around Kentucky are using media in their classrooms in innovative and creative ways, provide tips on how to start creating media, and explore how international artists are using media in their artworks. Each video has accompanying teacher materials to make it even easier to bring media into the classroom. Visit PBS LearningMedia and search “Media Arts Toolkit” to start exploring!



KENTUCKY'S BLACK HISTORY AND CULTURE

This collection of lesson plans focuses on Black history and culture in antebellum Kentucky. The lessons tell the story of Black enslaved people and their courage, resilience, joy, and sorrow. Learn about the contributions enslaved people made to Kentucky while fighting for their freedom by searching “Kentucky’s Black History and Culture” on PBS LearningMedia.

NEW & NOTABLE

FROM KET EDUCATION



ACTIVATE! SHORTS FOR DIGITAL LEARNING

Designed to inspire creative and engaging student learning, this series of shorts pairs a variety of rich resources from PBS LearningMedia with common digital tools to amp up student engagement and learning across content areas in a quick, easy to digest video format. Topics include Social Emotional Learning with Book Creator, Art Design and Travel Ads with Canva and more. The ever-growing series is at youtube.com/KETEducation.



YOUNG WRITERS CONTEST

Held annually, KET Education hosts a writing contest for emerging young authors across the commonwealth. We invite students in PreK through 12th grade to submit illustrated stories and students in Kindergarten through 12th grade to submit short stories, poems and graphic novels. Winners are selected and prizes awarded. Winning entries, read by the authors themselves, are featured on the contest website. Learn more at KET.org/writerscontest.



EVERYDAY LEARNING

Children learn by observing animal friends in the backyard, discovering new ways to get moving, picking out shapes in a walk around the neighborhood or critiquing a famous piece of art. Learning occurs naturally, everyday! This award-winning collection gives educators easy access to short videos and interactives created especially for the youngest students. Start exploring with your students by searching “Everyday Learning” on PBS LearningMedia.



LET'S LEARN

Let's Learn Kentucky is a new resource hub for parents and caregivers navigating those first formative years in a child's development. Developed and curated by KET and joined by partners throughout the state, the online initiative provides a one-stop center with an overview of what it means to be Kindergarten-ready. It features a variety of activities that parents and caregivers can incorporate into their child's daily routines to encourage learning, plus links to helpful resources. For more information, visit LetsLearnKY.org.

NEW & NOTABLE

FROM KET EDUCATION



MENTAL HEALTH: PROFESSIONAL DEVELOPMENT COURSES

Two new professional development courses focus on mental health needs. First, in Mental Health During the COVID-19 Pandemic, educators take a comprehensive look at mental health issues in students, updated with resources for the pandemic. And Suicide Prevention Train-the-Trainer is a guide for school and community-based mental health professionals to train staff to lead Kentucky's suicide prevention course. Learn more at shop.KET.org.

SKILLS ON DEMAND

SKILLS ON DEMAND

This collection for grades 6-12 combines scaffolded lessons, shorter reviews, and real-world applications on essential math and language arts subjects for middle and high school. Teachers can use individual Lessons or Tune-ups for effective online instruction, and students can explore answers to the question “When will I ever use this?” while engaging in interactive sessions. Get started by searching “Skills on Demand” on PBS LearningMedia.



WORKPLACE ESSENTIAL SKILLS

Find math and language arts content contextualized to seven high demand career sectors in this collection, as well as soft skills videos and interactive lessons to assist students as they develop universal skills. The content comes from the Workplace Essential Skills online study system that focuses on lessons that help prepare learners for work in high growth workplace sectors. Get started by searching “Workplace Essential Skills” on PBS LearningMedia.



CAREERS IN DEMAND

Ideal for high school students trying to determine which career pathway is right for them, this collection provides a snapshot of what a career in one of Kentucky's high-demand industries might look like. The videos include education and experience needed to get these jobs, salary ranges, work environment, and the projected number of job openings over a five-year period. Get started at KET.org/InDemand.







Bring the World to Your Classroom

We know how hard you work to support your students. You are their mentor, guide, and champion, helping them develop life's most important skills. And you know better than anyone else how to prepare them for the road ahead. That's why KET joined PBS, GBH and other public media partners to contribute to PBS LearningMedia, a trusted source for pre-K-12 classroom resources. It offers free and easy access to thousands of lesson plans, videos, interactives, productivity tools, and curated collections to give every teacher the chance to create one-of-a-kind learning experiences that ignite students' curiosity.



PBS LearningMedia Features:

-  Thousands of Classroom-Ready Resources Aligned to State and National Standards
-  Award-Winning, Educational Content
-  Free Access for Every Teacher across America
-  Compatibility with Google Classroom, Schoology, Clever and Remind

KET.pbslearningmedia.org

Find thousands of high-quality videos, interactives, images, document and audio files.

Find resources for every grade level.

Sync class rosters, assignments, and assignment results with Google Classroom.

Build a series of media-rich slides to guide your students through a lesson.

Many resources are downloadable.

Resources are curriculum-targeted and aligned to Common Core and national and state standards.

Teaching in-person or virtual? Find resources to support new school routines. [View Collection >](#)

PBS LearningMedia | **KET**

Search Sign In Sign Up

Subjects Grades Standards For Students

Kentucky Symbols | Social Studies Shorts

Video Grades: 3-5, 6-8 Collection: Social Studies Shorts

0:00 / 3:26 1x CC

Support Materials for Use with Students

DISCUSSION QUESTIONS
Discussion and writing prompts for Kentucky Symbols

HANDOUTS
Kentucky Symbols printable quiz

VOCABULARY
Key terms used in Kentucky Symbols

You May Also Like

- Kentucky Legislature | Social Studies Shorts (3:14)
- Kentucky Governor | Social Studies Shorts (2:51)
- Women in Kentucky | Social Studies Shorts (3:50)
- News Literacy | Social Studies Shorts (4:10)

Curriculum

Social Studies Elementary Social Studies
State and Region Symbols, Slogans, and Mottos

More from the Social Studies Shorts Collection

- Economy | Social Studies Shorts (3:04)
- Presidential Inauguration | Social Studies Shorts (3:39)
- United Nations | Social Studies Shorts (3:17)
- Women in Kentucky | Social Studies Shorts (3:50)
- News Literacy | Social Studies Shorts (4:10)

See the Collection

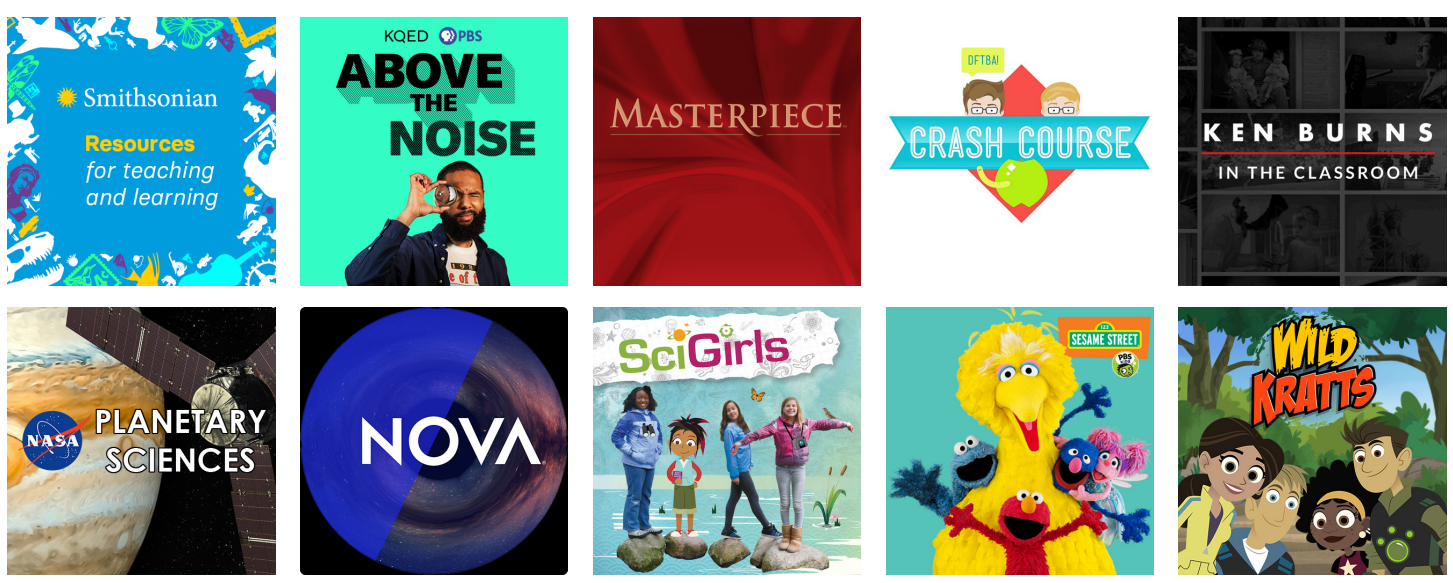
Sign up for a free account to unlock a range of additional features including saving, downloading, and creating content using your favorite resources.

Customize the way you search.

Resources are contextualized with support materials for teachers and students including background reading, discussion questions, handouts, vocabulary, activity ideas, and much more!

Find similar suggested resources or resources that belong to the same content collections.

PLUS FIND RESOURCES FROM THESE PUBLIC MEDIA PARTNERS, AND MANY MORE:



Instructional Integration FRAMEWORKS

KET Education's simple to use frameworks, designed by our Education Consultants, will make integrating research-based PBS LearningMedia and PBS KIDS content into virtual and in-person lessons easier than ever.

PBS LearningMedia

Independent research proves that students using PBS LearningMedia digital content outperformed national assessment norms by 10 percentage points and more than half (56 percent) of students also showed an increase in the frequency with which they engaged in critical thinking practices. Learn more about PBS LearningMedia on pages 8-9.

Follow this usage framework to integrate PBS LearningMedia content into your lessons:

1 Access

Quickly build standards-aligned lessons across grade levels and content areas that are effective for in-person learning, virtual learning or hybrid learning via PBS LearningMedia. Easily create a FREE account to save and curate personalized content.

Use PBS LearningMedia standards-aligned video clips to pique student interest, introduce new concepts or to visualize topic vocabulary. Resources are easily shared and assigned via Google Classroom and are compatible across learning management systems.

2 Introduce

3 Apply

Give students hands-on practice with interactive resources. Develop deeper understanding or provide student exploration opportunities by utilizing the Support Materials, such as Activities or Handouts, which can be found with each resource.

Check for understanding by using associated *Discussion Questions* from a resource's *Support Materials* – either by in person questioning, via virtual tools, or through common formative assessment practices.

4 Assess

5 Connect

Encourage students to make connections and share learning by creating with media-rich technology tools. Resources within PBS LearningMedia are easily integrated with a variety of online learning tools.

PBS KIDS

Through its commitment to offer curriculum-based entertainment, PBS KIDS provides shows, activities and support materials to both entertain and elevate children's education. These free, evidence-based resources help build math, science, literacy, and social-emotional skills and can be utilized across a variety of learning models and environments. Much of the content has been contextualized for classroom use.

When reliable internet access may be an issue, PBS KIDS programming is a great option. All PBS KIDS series and apps are aligned to curriculum areas and specific learning goals.

You can find the broadcast schedule for all of KET's channels online—including the 24/7 KET PBS KIDS channel. Programming is also available online at KET.org/kids and through the PBS KIDS Video App. Learn more about PBS KIDS content on pages 12-13.

Follow this usage framework to integrate PBS KIDS content into your lessons:

1

Access

Tune in to the 24/7 KET PBS KIDS channel, or check the KET broadcast schedule, to access high-quality, research-backed and educationally focused PBS KIDS content. These engaging programs are effective for in-person, virtual or hybrid learning settings, and can be easily integrated without the need for internet access.

2

Introduce

Pique student interest, introduce new concepts, visualize topic vocabulary, or explore social-emotional learning strategies using students' favorite PBS Kids programs and characters.

3

Apply

Demonstrate learning with printable, hands-on interactive resources for educators and families from PBS LearningMedia. Conduct experiments, complete activity sheets, and apply concepts using connected pre-made resources.

4

Assess

Choose 2-3 questions from the *Discussion Question Cards* or the *PBS KIDS Shows Conversation Guide* to guide discussion, assess retention or showcase learning.

5

Connect

Give students additional practice using content-specific interactive games found at PBSKIDS.org. Utilize extra features (such as the Creaturepedia in *Wild Kratts* or the podcasts in *Molly of Denali*) on PBSKIDS.org to further explore topics and concepts related to each program.

WORK IT OUT WOMBATS (PreK-K)

Work it Out Wombats stars Malik, Zadie, and Zeke—three energetic and creative marsupial siblings who live with their grandmother in her treehouse apartment complex. The playful trio will demonstrate computational thinking for preschoolers, a way of thinking that enables them to solve problems, express themselves, and accomplish tasks using the practices, processes, and ideas at the core of computer science. Work it Out Wombats is set to premiere in early 2023



ROSIE'S RULES (PreK-2)

Rosie's Rules stars 5-year-old Rosie Fuentes, a bilingual Mexican-American girl from suburban Texas who is just beginning to learn about how the great, big, fascinating world around her works. Featuring an engaging social studies curriculum, a dynamic cast of characters, catchy music, and hilarious stories, the new series aims to show PreK-1 students how they, as individuals, fit into their own community, as well as broader society. Rosie's Rules premieres in October on KET.

ALMA'S WAY (K-2)

The engaging modern-day series stars 6-year-old Alma Rivera, a proud, confident Puerto Rican girl, who lives in the Bronx with her parents and younger brother, Junior, as well as a diverse group of close-knit and loving friends, family, and community members. The show gives K-2 students the power to find their own answers to their problems, express what they think and feel, and recognize and respect the unique perspective of others.



ELINOR WONDERS WHY (PreK-K)

Students join in the adventures of Elinor, a curious and observant bunny rabbit, and her pals as they ask questions and explore the remarkable ways that our everyday lives are connected to nature. Viewers are encouraged to follow their curiosity, ask questions, figure out the answers, and learn about the natural world around them using their science inquiry skills.



PBS KIDS Learning Goals

SOCIAL & EMOTIONAL LEARNING

Alma's Way	K-2	Social & Emotional Learning, Executive Function
Arthur	K-2	Social & Emotional Learning
Clifford the Big Red Dog	PK-K	Social & Emotional Learning, Literacy
Daniel Tiger's Neighborhood	PK-K	Social & Emotional Learning
Donkey Hodie	PK-K	Social & Emotional Learning, Executive Function
Mister Rogers' Neighborhood	PK-K	Social & Emotional Learning
Sesame Street	PK-K	Literacy, Math, Social & Emotional Learning
Xavier Riddle and the Secret Museum	K-2	Social & Emotional Learning

LITERACY

Martha Speaks	K-2	Literacy	24/7 Channel
Molly of Denali	K-2	Literacy	
Super WHY!	PK-K	Literacy	24/7 Channel
WordGirl	K-2	Literacy	24/7 Channel
WordWorld	K-2	Literacy	24/7 Channel

STEM

(Science, Technology, Engineering & Math)

Curious George	PK-K	Math, Science & Engineering	
Cyberchase	1-2	Math	
Dinosaur Train	PK-K	Science	
Elinor Wonders Why	PK-K	Science & Engineering	
Hero Elementary	K-2	Science & Engineering	
Nature Cat	K-2	Science	
Odd Squad	K-2	Math	
Peg + Cat	PK-K	Math	
Peep and the Big Wide World	PK-K	Science	24/7 Channel
Ready Jet Go!	K-2	Science & Engineering	
SciGirls	1-2	Science & Engineering	
Sid the Science Kid	PK-K	Science	24/7 Channel
Splash and Bubbles	PK-K	Science	
The Cat in the Hat Knows a Lot About That!	PK-K	Science & Engineering	
Wild Kratts	K-2	Science	
Work It Out Wombats!	PK-K	Computational thinking	

SOCIAL STUDIES, THE ARTS & MORE

Let's Go Luna!	K-2	Social Studies
Pinkalicious & Peterrific	PK-1	The Arts
Rosie's Rules	PK-2	Social Studies

Digital-Only

Oh Noah!	K-2	Spanish, Social Studies
Scribbles and Ink	K-2	The Arts

Digital-Only

Design Squad Global	1-2	Science & Engineering
Team Hamster	K-2	Science & Engineering
The Ruff Ruffman Show	K-2	Science & Engineering

EARLY CHILDHOOD EDUCATION



EARLY CHILDHOOD CONSULTANTS

When you think of KET and early childhood, you probably think of our engaging, imaginative on-air PBS KIDS programming. Designed to boost cognitive, social, emotional, and physical development, these series often have accompanying websites with video, interactive games, hands-on activities, and more.

But KET offers much more! KET Early Childhood Consultants provide customized professional development opportunities to enhance learning in the early childhood classroom. Our consultants provide the tools and resources necessary to engage young learners. Learn how to connect on page 3!



EARLY CHILDHOOD PROFESSIONAL DEVELOPMENT

Need to earn credits towards your annual training requirements? KET offers a variety of options to fit your training needs.

KET Early Childhood Consultants provide FREE, for credit training for early childhood professionals, all aimed at increasing effectiveness and family engagement to support children's school readiness in STEAM, social studies, literacy, and health. Workshops are available to early childhood educators statewide regardless of your setting. For details, visit KET.org/ECEWorkshops.

You can also find online courses from KET, PBS KIDS, and Sesame Street in Communities that are available free of charge and have been approved for ECE-TRIS credit. For details, visit shop.KET.org.



LET'S LEARN KENTUCKY

Let's Learn Kentucky, developed and curated by KET, is a resource hub for parents and caregivers navigating the early years, from birth through the time they enter school, a formative time for children's development. Like early childhood education itself, sharing resources and information takes a strong network of support and advocacy. The hub is brought to you in partnership with the Kentucky Governor's Office of Early Childhood and the Kentucky Department of Education. Learn more at LetsLearnKY.org.

READY TO LEARN

In 2020 KET was among 12 PBS stations selected to participate in a new Ready To Learn initiative that aims to help young children build the vital skills they need to succeed in school and life. KET has participated in previous cycles of the Ready to Learn initiative, resulting in the development of a variety of engaging early learning resources as well as numerous community events.

You can find free resources from these initiatives on PBS LearningMedia. Visit PBS LearningMedia frequently to find the newest resources featuring new and beloved characters such as *Molly of Denali*, *Work It Out Wombats* and *Elinor Wonders Why*. You can also find research studies evaluating the effectiveness of the materials and products created through the Ready To Learn grant. Simply start by searching “Ready to Learn” on PBS LearningMedia.



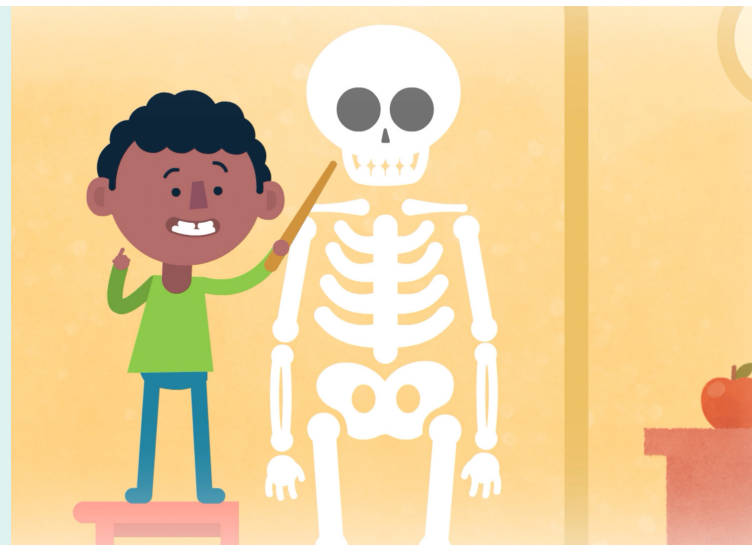
VIRTUAL LEARNING SERIES

KET's Early Childhood Consultants have teamed up with our K-12 School Services team to bring educators a new webinar series that focuses on engaging students of all grade levels with easy-to-use, quality, education-focused content and digital tools. Recent sessions have focused on social and emotional learning, free resources from PBS KIDS, informational text, and more. The series will be presented twice a year—in fall and spring. All sessions are approved for ECE-TRIS credit. Check out our selection at KET.org/VLS.



EVERYDAY LEARNING

Comprised of resources from Everyday Science for Preschoolers, Everyday Math for Preschoolers, Healthy Me, All Around Me, and Art to Heart, the Everyday Learning collection on PBS LearningMedia gives educators easy access to short videos and interactives created for the youngest students. The resources are narrated by Kentucky children and are accompanied by a plethora of activity suggestions and additional support materials. Start exploring with your students by searching “Everyday Learning” on PBS LearningMedia.



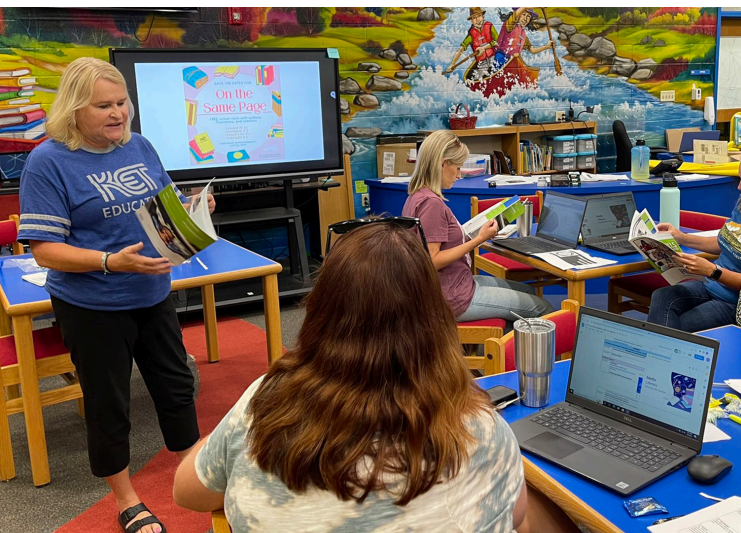
K-12 SCHOOL SERVICES



K-12 EDUCATION CONSULTANTS

Do you need a skilled guide to help implement new technology resources? Are you looking for support in creating engaging, media-rich lessons for your students? Or assistance finding resources and learning opportunities for faculty and students? KET Education Consultants are here to help!

From personalized training and consultations for educators to hands-on workshops for students, the KET Education Consultants are ready to help make your goals a reality. These in-person and virtual services are provided at no cost and are approved by the Kentucky Department of Education for professional development credit. Learn how to connect on page 3!



EDUCATOR TRAINING

KET Education Consultants offer dynamic, personalized training for educators of all grade levels and content areas. From technology beginner to seasoned professional our Education Consultants are ready to provide the resources and tools to create enriching learning experiences for students.

Whether your needs lie in effectively integrating PBS LearningMedia resources and tools, creating project-based learning experiences within the Media Arts, or even leveraging effective Media Literacy strategies, we provide rich training experiences for educators. Contact your KET Education Consultant to learn more.



STUDENT WORKSHOPS

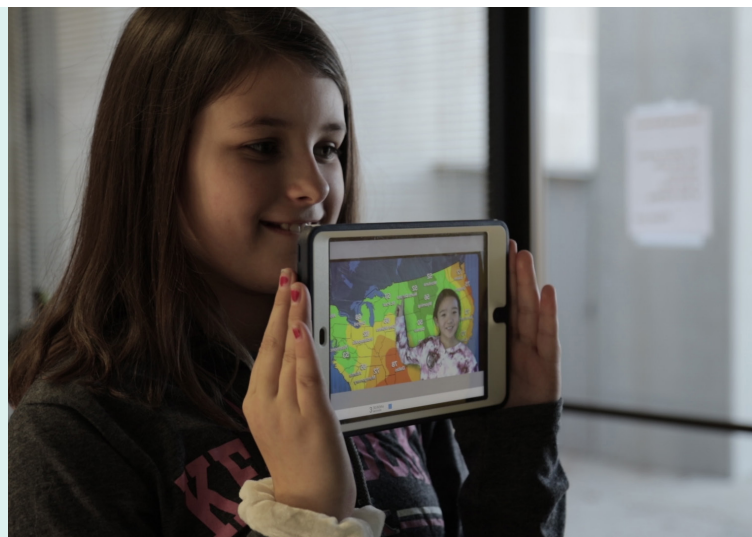
Can your students tell fact from fiction online? Are they ready to create content-inspired animations? Do you have students who would blossom by producing video projects or developing podcasts? Your KET Education Consultants can help with this and much more!

With KET's in-person and virtual student workshops, your class will learn how to effectively utilize, create, and share a wide variety of media-infused projects. Contact your KET Education Consultant to learn more.

MEDIA LAB TRAININGS

Build student skills in media production and editing, explore apps to make project-based learning come to life in less time and for less cost, introduce students to a variety of creation platforms, and find out about KET's numerous online classroom resources for teaching the Media Arts with KET's Media Lab training. Built for both educators and students, these trainings have become virtual events to meet the needs of schools across Kentucky.

For a full list of available training topics, and to schedule, visit: KET.org/medialab.



SUMMER PROFESSIONAL DEVELOPMENT EVENT

Each year, the KET Education team hosts our Summer Professional Development Days—a time for participants to discover and explore new tools and resources, hear from the experts, and share in the conversation. Many past sessions have been recorded and are available for free on the KET Education YouTube channel. Find links to these sessions and materials at KET.org/SummerPD.

Look for registration information for the 2023 event online beginning in April 2023.



VIRTUAL LEARNING SERIES

Looking for ideas and resources to enhance learning and teaching, wherever they occur? Then pencil us in and save the day! Join KET Education Consultants and all-star Kentucky educators for our Virtual Learning Series of webinars, designed to help teachers engage students and discover new ways to incorporate easy-to-use, quality, education-focused content, for students of all grade levels! All sessions are approved for professional development and ECE-TRIS credit. Check out our selection at KET.org/VLS.



PROFESSIONAL DEVELOPMENT



EARN PROFESSIONAL DEVELOPMENT CREDIT AT YOUR OWN PACE

KET's user-friendly online courses are offered through a collaboration with the Kentucky Department of Education. They feature video segments, interactive activities, reflection questions, resources for more exploration, and quizzes; and most are free. These courses can also be used by professional learning communities and integrated, in whole or in part, into facilitated group sessions. Learn more at shop.ket.org.



MENTAL HEALTH DURING THE COVID-19 PANDEMIC COURSE

In this self-paced course, educators take a comprehensive look at mental health issues in students, updated with resources for the coronavirus pandemic. Topics include depression and anxiety, trauma and toxic stress, and mental health interventions. It teaches educators how to listen and to foster connections and a sense of safety to help students, both in-person and online. Get started at shop.ket.org.



SUICIDE PREVENTION TRAIN-THE-TRAINER REFRESHER COURSE

This one-hour self-paced course is a guide for school-based or community-based mental health professionals to train school staff to lead Kentucky's suicide prevention course for students in grades 6-12. Topics include how to give students a voice in the training, how to recognize signs of suicidal ideation, how to deal with social media pressures, and how students can find help for themselves or their peers in distress. Get started at shop.ket.org.

COLLEGE AND CAREER READY

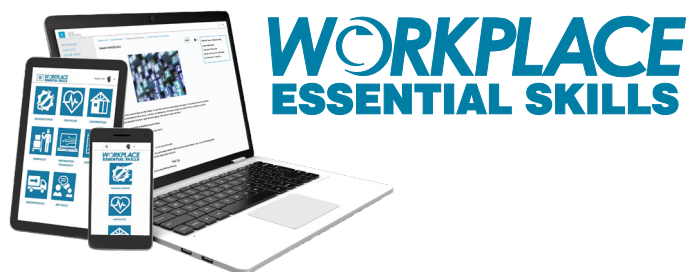
JUMPSTART YOUR FUTURE

In today's world, a high school diploma is not enough. But what if you don't even have a high school diploma? As public media's leading provider of adult education services, KET can help Kentuckians meet and overcome this challenge. For more than 50 years, KET has worked to make education equitable and accessible for all. KET Education's Adult Education team offers professional development for adult educators and innovative curriculum for learners.



WORKPLACE ESSENTIAL SKILLS

These online lessons provide training for soft skills and job readiness and are contextualized within employment sectors using real workplace examples. The curriculum focuses on math and language arts skills needed to perform in high demand career fields. Job searching, resume prep, professional communication and other job success strategies are addressed, as well as critical thinking, problem solving, and more. Learn more at KET.org/WES.



FASTFORWARD

Current high school equivalency assessments reflect more rigorous high school and college/career readiness standards. To prepare learners, KET presents FastForward—a comprehensive online system that offers in-depth courses in language arts, mathematics, science, and social studies; professional development for educators; and more. It can be used to supplement classroom instruction or for independent study. Learn more at KET.org/FastForward.

FASTFORWARD™



PBS LEARNINGMEDIA + DIGITAL TOOLS = STUDENT ENGAGEMENT

Amp up digital activities and engage students in learning by combining the easy-to-use, research-backed, quality, education-focused content within PBS LearningMedia paired with popular, interactive digital tools.



Google Classroom

PBS LearningMedia has one-click integration with Google Classroom. See a resource you want to share? Simply click the Google Classroom icon and send it directly to your students.



After sharing a video that presents a controversial issue, create a Padlet where students can argue for or against the claim, offer opposing viewpoints, and discuss the evidence.



Pear Deck

By creating a "website slide," students will be able to interact with the resources (video clips, interactives, and more) on PBS LearningMedia without ever leaving your Pear Deck lesson presentation.



Based on their research of a specific period of history, students create a digital scene of the period and insert their bitmoji. Students then write or record their encounters and experiences to demonstrate understanding and extension.



After investigating state or national parks within PBS LearningMedia, students design advertisements which will entice visitors to explore a chosen park, highlighting key natural features, unique wildlife, or rich history.



After students engage with a resource, they record a short Flipgrid video verbally answering the discussion questions provided in the Support Materials. Students can ask questions, view classmates' responses, and collaborate.



GarageBand

Students can develop a podcast complete with sound effects and a composed intro and outro based on a current issue that impacts their lives. The KET Media Arts Toolkit, found within PBS LearningMedia, contains videos and resources to get started. Additionally, students may choose to compose a song, complete with lyrics, for a class assignment that reteaches what they have learned, persuades, or solves a problem.



If your school or community is communicating, collaborating, and sharing with students and families via Remind, you can easily share resources from PBS LearningMedia. Every resource — from video clip to audio file to interactive — can be shared via this text messaging-based service.



Foreign language students can use Screencastify to translate simple, vocabulary rich, topic-focused videos into their second language. One great resource collection is The Word on the Street literacy video series from Sesame Street. Can also be used for ELL.



Using images from KET's Image Bank, students create nature fact cards with Adobe Spark. After researching the organism, students combine information and image to show what they learned.



Storytelling with Words and Pictures guides students to write a story with a clear setting, conflict, and resolution. Students can bring their newly created stories to life with Book Creator, adding images, audio, text features, and more.



Students can curate PBS LearningMedia resources, along with their own video, using Wakelet, to create a virtual Science Fair project, showcase a chosen career path, or even build a health and exercise plan — the possibilities are endless.



After early learners explore a topic such as graphing utilizing the Everyday Math for Preschoolers collection, they can use the multi-platform Stop Motion Studio to construct and animate their own graph.



edpuzzle

Check for understanding, annotate information, add audio guidance, ask questions, and introduce students to self-paced learning.

"I love how it gives us news from here in Kentucky as well as around the world. It gives my students a different perspective."
- Fayette County Elementary Teacher

"My students literally cheered every Thursday when it was time for News Quiz. The stories were always captivating and shared in a way that could easily be understood. Students were exposed to so many fun facts, geographical maps, and trending stories from around the world."
- Caldwell County Elementary Teacher



News Quiz

**JOIN OTHER STUDENTS
ACROSS KENTUCKY AND
THE UNITED STATES FOR KET'S
WEEKLY CURRENT EVENTS SHOW.**

[KET.org/newsquiz](https://ket.org/newsquiz)

KET

- KET's primary broadcast channel, in high definition
- Kentucky public affairs and cultural programs produced by KET
- PBS and PBS KIDS

KET2

- How-to and lifelong-learning programs
- PBS and PBS KIDS

KET KY

- Extensive, live coverage of the Kentucky General Assembly
- Programs about Kentucky people, places, history, and issues

KET PBS KIDS

- Safe, non-violent, educational programming from PBS KIDS
- On-air and streaming online at KET.org/kids 24 hours a day

PBS LEARNINGMEDIA

- Tens of thousands of standards-based videos, interactives, lesson plans, and more from critically acclaimed PBS programs
- Compatibility with Google Classroom, Schoology, Clever and Remind

